

Veritas NetBackup™ 6.0 Shared Storage Option

(Now from Symantec™)

Innovative Data Protection

Veritas NetBackup Shared Storage Option helps decrease tape hardware and management costs while enabling high-performance data protection and storage networking resiliency.

Leveraging the advantages of Fibre Channel, SCSI, or iSCSI connectivity, the Shared Storage Option allows individual tape drives (stand-alone or in a robotic library) to be shared dynamically among NetBackup Media Servers and NDMP NAS devices.

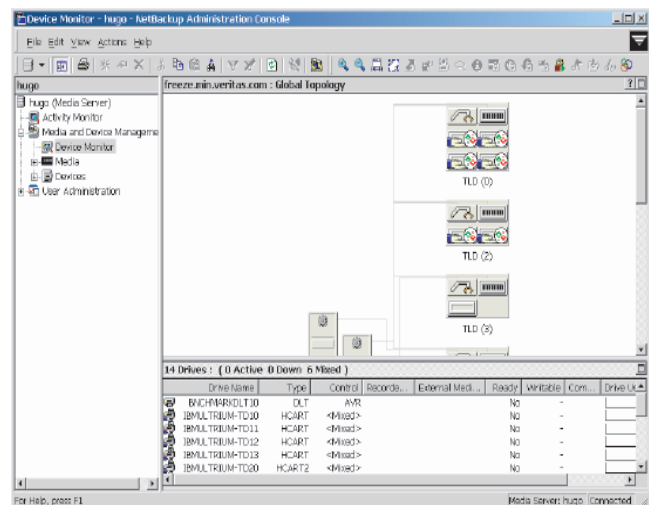
To ensure consistency across NetBackup servers, a central device allocator and configurator consolidates shared tape drive management and configuration.

Automatically allocating shared tape drives as backup and restore operations dictate, NetBackup Shared Storage increases the utilization of tape drives that often remain idle. The end result facilitates a lower overall cost of ownership of tape resources to protect data throughout the enterprise.

SHARED STORAGE OPTION HIGHLIGHTS

- Minimized Backup Costs — Increase tape drive utilization and lower the number of total drives required
- Reduced Backup & Recovery Times — Shift resources to the demanding backup and recovery operation
- NDMP NAS Support — Share tape drives between NDMP NAS devices and NetBackup Media Servers

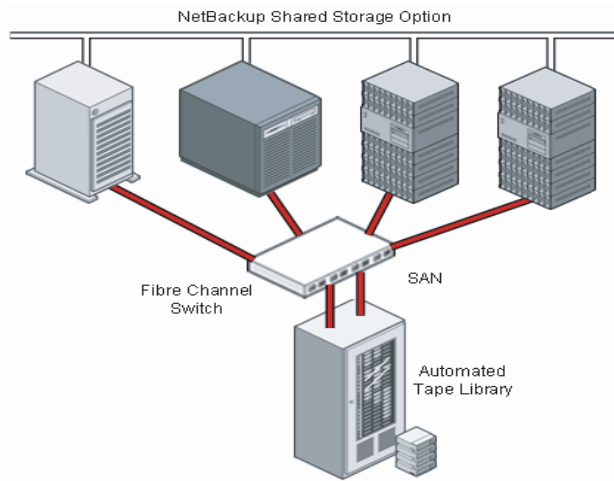
- Rapid Deployment — Graphical wizards quickly discover and configure shared tape drives.
- Checks and Balances — Configuration Analyzer verifies that device configuration settings are consistent and checks for potential configuration problems.
- SAN Resiliency — Advanced technologies, including SCSI Reserve/Release, protect against resource conflicts and improve drive availability.
- Fault-Tolerant — Access additional tape resources in the event of a drive or network failure; includes support for multiple paths to tape drives.
- Firewall Support — Share tape drives across firewall.
- Centralized Device Allocation — Centralized control of which NetBackup Servers are utilizing shared drives.



The easy to use NetBackup Administration Console graphically displays all server and drive connectivity.



Data Sheet: Data Protection
Veritas NetBackup 6.0 Shared Storage Option



NetBackup Support:

NetBackup Enterprise Server
NetBackup Server (NDMP and NetWare® Only)

Platform Support:

Windows®, Solaris™, AIX®, HP-UX, Tru64 UNIX, Red Hat®
Linux, SUSE Linux®, NetWare, and NDMP NAS

Tape Robot Support:

TLD, TLH, TLM, TL8, or drives controlled by the
Automated Cartridge System (ACS)

More information

Visit our Web site

www.symantec.com

To speak with a Product Specialist in the U.S.

Call toll-free 1 (800) 745 6054.

To speak with a Product Specialist outside the U.S.

For specific country offices and contact numbers, please
visit our Web site.

About Symantec

Symantec is the world leader in providing solutions to help individuals and enterprises assure the security, availability, and integrity of their information. Headquartered in Cupertino, Calif., Symantec has operations in more than 40 countries. More information is available at www.symantec.com.

Symantec Corporation World Headquarters

20330 Stevens Creek Boulevard
Cupertino, CA 95014 USA

1 (408) 517 8000

1 (800) 721 3934

www.symantec.com

