

Symantec Backup Exec™ 11d for Windows® Small Business Server—Premium and Standard Editions

Comprehensive data protection and recovery for Microsoft® Windows Small Business Server

Today's small businesses require the same leading-edge technology as large businesses to be successful and stay ahead of the competition. Their challenge is to implement these state-of-the-art solutions at a fraction of the cost and complexity using limited resources.

Symantec Backup Exec 11d for Windows Small Business Server—Premium and Standard Editions is the perfect complement to Windows Small Business Server editions. Together, these products provide an end-to-end foundation for networking, comprehensive data protection, and recovery for Windows Small Business Server.

Symantec Backup Exec 11d for Windows Small Business Server is designed to deliver cost-effective, easy-to-use, highly reliable, and comprehensive data protection and recovery for Windows Small Business Server. This robust suite features backup, restore, disaster recovery, single-drive library support, Microsoft Exchange Server, Microsoft SQL Server (Premium edition only), and Windows SharePoint® Services protection and recovery. Backup Exec 11d for Windows Small Business Server also comes with encryption capabilities, protection for open files on the Windows media server, and data protection and recovery for desktops and laptops connected to the Small Business Server. A select family of powerful agents and options delivers robust storage management tools to meet diverse application needs for growing and upgrading storage management capabilities.

Symantec Backup Exec 11d for Windows Small Business Server provides exceptional value at a low price. Best of all, the products are easy to install and manage.

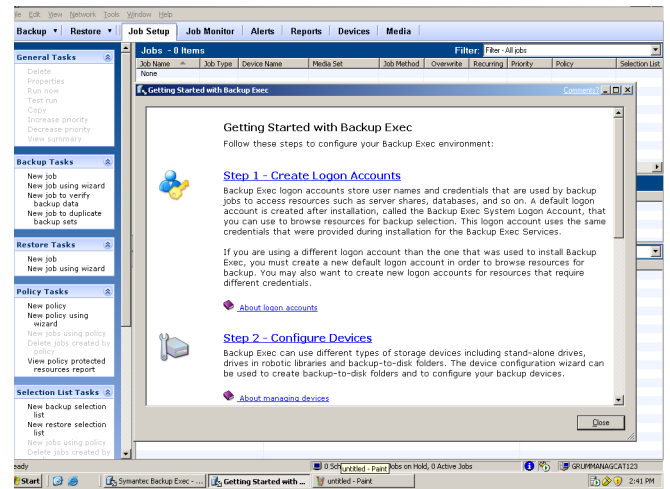


Figure 1. A graphical user interface helps ease installation, simplify backup and recovery administration, and consolidate management operations into a single console.

Key benefits

- Comprehensive data protection and recovery for Microsoft Windows Small Business Server 2000 and 2003—Standard and Premium Editions (including Microsoft Windows Small Business Server 2003 R2 Standard and Premium Editions)
- Proven, trusted, and reliable data protection and recovery solution
- Fast backups and restores of Exchange Server, SQL Server, and Windows SharePoint Services
- NEW! Includes data protection and recovery for desktops and laptops
- NEW! Includes Open File Protection (OFF) for Small Business Server



- NEW! Features enhanced data security with encryption of all backed-up data
- NEW! Supports 64-bit environments for better performance
- NEW! Integrated with Symantec LiveUpdate™ for easier updates and notifications
- Easy setup and simplified management through user-friendly wizards
- Quick and easy tape-based disaster recovery of your entire system

Product highlights

- **NEW! Designed specifically for Microsoft**—Backup Exec for Windows Small Business Server has been designed and priced for both the Standard and Premium Editions of Windows Small Business Server.
 - **Cost-effective and comprehensive data protection and recovery solution**—Backup Exec software's Small Business Server Premium and Standard Editions provide granular and fast data protection and recovery for Windows Small Business Server 2000 and 2003 in one comprehensive suite. Core functionality includes database agent technology for protecting Exchange Server and SQL Server as well as Open File Protection (OFP) for Small Business Server.
 - **NEW! AES 128-bit and 256-bit encryption**—Backup Exec for Windows Small Business Server provides AES 128-bit and 256-bit encryption when data is backed up to tape on Small Business Server or if a remote server is being protected. Administrators can specify which data backup jobs are to be encrypted, allowing administrators to encrypt only sensitive data or data copies intended for offsite storage.
- **NEW! Support for 64-bit environments**—Backup Exec for Windows Small Business Server provides support for 64-bit environments, specifically Intel Xeon® EMT64, Intel® Pentium® EMT64, AMD Athlon, and AMD Opteron processors.
 - **Proven and trusted solution**—Be confident that you are covered all the time by deploying this proven and trusted certified backup and recovery solution in your environment. This robust, multistage, disk-based backup solution also includes a breadth of notifications of job success and failures.
 - **Fast backups and restores**—Disk- and tape-based data protection and recovery enables fast and reliable backups and restores.
 - **Ease of use**—An enhanced install wizard helps ensure fast and successful installations. A Web-based administration console, new policy wizard, and the Backup Exec assistant enable easy management and improve the overall customer experience.
 - **Enhanced! Faster, flexible backup and restore management of online Exchange servers**—Restore individual messages or mailboxes without having to run multiple jobs to protect the Exchange data store. Single Instance Storage (SIS) of email message attachments, incremental or differential mailbox backups, and individual public folder restore provide granularity and deliver faster backup and recovery of Exchange servers.



- **NEW! Includes Open File Protection**—Improves data protection and recovery by protecting open files on Small Business Server.
- **NEW! Includes desktop and laptop data protection and recovery**—Enables continuous disk-based protection and synchronization for users that are in the office or on the road. Designed to automatically copy user data to existing network shares or storage, this protection allows quick recovery of data by the administrator or user for optimum efficiency. The new push-install functionality from within Backup Exec streamlines deployment, and user-specific backup reports improve data and service-level visibility.
- **Continuous data protection and recovery for Windows file servers**—Continuous disk-based data protection and recovery helps eliminate backup windows, improve reliability, and deliver the first Web-based end-user file restore functionality.
- **Disaster recovery of the entire environment**—Provides basic system backup and recovery at no extra cost, eliminating the need to reload the entire operating system of crashed servers. Includes the ability to create system-specific recovery media for protected systems even after a system crashes.

Included agents and options

Agent for Microsoft Exchange Server

Now individual messages or mailboxes can be recovered in seconds, because you no longer have to do mailbox backups or use MAPI-based backups. This fast and flexible technology protects vital Exchange Server 2000, 2003, and 2007 data while the application is online. The agent provides full, incremental, or differential backup and restores of embedded

objects, attributes, and all Microsoft Outlook® components. Restore can automatically mount the database upon completion of backups, which helps ensure that the valid database is brought back online quickly. The Single Instance Storage feature eliminates backup of duplicate information by storing only the first instance of attachments distributed to multiple mailboxes. This reduces backup and recovery time as well as storage needed on disk or tape media.

For Exchange Server 2007, this agent supports local continuous replication (LCR) and clustered continuous replication (CCR) configurations. Full and incremental backups can be done against a replica database without affecting the production database.

Agent for Microsoft SQL Server

Integrated with SQL Server 2005, this agent helps ensure that business-critical databases and e-business data are protected in the event of application- or hardware-based corruption or loss. It provides SQL Server 7.0, SQL Server 2000, and SQL Server 2005 users with granular protection down to the individual database or file group. Execute differential backups as well as Transaction Log backups with automatic truncation. New integration with SQL Server 2005 snapshots means quick restores of SQL Server 2005 snapshots in seconds. Also, restore with one-pass recovery of the last full and any subsequent backup as a single restore job, or perform “rollback restores,” enabling a database to be recovered to a specific moment in time, rather than a specific restore point based on the last backup job. Virtual Device Interface (VDI) support gives you the most dependable and fastest method available for comprehensive SQL Server protection. The agent supports Microsoft Volume Snapshot Service (VSS) technology to create point-in-time, recovery-consistent snapshots of SQL Server 2000 and SQL Server



2005 on Windows Server 2003. Consistency checks can be performed before backup when using Microsoft VSS snapshot provider.

NEW! Advanced Open File Option for Windows Small Business Server

Now included at no additional charge, this option helps ensure that files on the Small Business Server are protected even while in use. The Backup Exec Advanced Open File Option handles open files at the volume level and is seamlessly integrated into Backup Exec software. There is no need to know which files are open ahead of time; just set a scheduled backup to use this option with a simple mouse click. It can back up multiple volumes in one job while creating a snapshot of only one logical volume at a time. After the logical volume is snapped and backed up, the snapshot is deleted before the next logical volume is snapped. This feature increases the ability to meet the minimum quiet time needed to complete a snapshot. Advanced technology also makes it possible to detect and leverage alternate frozen image technologies such as Microsoft Volume Snapshot Service on Windows Server 2003 or the Veritas Storage Foundation™ for Windows FlashSnap™ Option for increased application availability.

NEW! Desktop and Laptop Option

Most businesses rely on users to manually copy business-critical data to a server. When users do not comply, the majority of business-critical information residing on employee workstations, desktops, and laptops does not get protected. Now included at no additional charge and with support for Windows Vista™, the Desktop and Laptop Option delivers continuous data protection and recovery to desktops and laptops whether in the office or on the road. In addition to improving data protection and efficiency, this option enables

users to restore their own files and maintains synchronization between multiple desktops and laptops so the most up-to-date file versions are available on all of a user's computers. Because the Desktop and Laptop Option does not require a dedicated stand-alone server as competing products do, it easily integrates into existing IT infrastructure and policies, helping lower the total cost of ownership. The new push-install functionality from within Backup Exec centralizes deployment. This version also allows the use of expanded Global Exclude options to specify the attributes of files that you want to exclude from backups or that you do not want to compress, encrypt, or back up with delta file transfer. You can also exclude attachments to emails or specific email folders from backup jobs.

Improved! Intelligent Disaster Recovery Option

Now with a simplified recovery wizard, this basic system recovery solution saves recovery time by automating the traditional manual, error-prone process. The Backup Exec Intelligent Disaster Recovery (IDR) Option automates server recovery, reducing the time to recover, and gets you back into business quickly. Implement a server recovery solution for both local and remote Windows servers, eliminating the need to first reload the entire operating system of crashed servers. Using either diskette-based, CD-R/CD-RW, or bootable tape, the IDR Option quickly recovers downed servers and workstations, enabling restores from the last complete backup set, including full, differential, incremental, and working set backups. It integrates directly with Microsoft's Automated System Recovery (ASR) functionality in Windows Server 2003 and Windows XP to provide complete disaster recovery on Windows servers. With Offline Protection functionality, even when a computer crashes before administrators create disaster recovery media, IDR can still recover



the computer using a full backup made prior to the crash that includes information needed to restore the system.

Additional Small Business Server agents and options sold separately

Library Expansion Option

Scale the media storage system by leveraging additional drives within multidrive tape or optical autoloader/library storage systems. This option leverages Backup Exec Advanced Device and Media Management (ADAMM) technology to provide extensive configuration and management capabilities, including “lights-out” backup and restore operations, bar code reader, and portal support for both SCSI and fiber-attached devices. You can partition slots within libraries to target backup jobs to a specific slot.

Remote Agent for Windows/Netware Systems (includes Continuous Protection Agent for Windows Servers)

The bundled Remote Agent expands networkwide data protection and optimizes data transfers for 32- and 64-bit remote Windows servers, including local registry and system state information. Exclusive Agent Accelerator technology maximizes backup and recovery performance by providing source-level compression and distributed processing at the client. The result is reduced network traffic and maximized data throughput.

The Remote Agent now includes the functionality of the Continuous Protection Agent, delivering continuous disk-based data protection for remote file servers with LAN or WAN connectivity to the Backup Exec Continuous Protection Server. It simplifies backups by consolidating data protection and recovery into a central server, eliminates the backup window needed to protect each file server, and provides

faster restores by helping to ensure that business-critical data is immediately accessible. Point-in-time snapshots of data on the Continuous Protection Server are periodically captured and protected to provide versioning and granular point-in-time recovery of files. Full system state information is also protected. You can seamlessly retrieve previous versions of files using Backup Exec Retrieve, a simple Web-based recovery tool.

Advanced Open File Option for Remote Windows Servers

This option helps ensure that files on remote servers are protected even while in use. The Backup Exec Advanced Open File Option handles open files at the volume level and is seamlessly integrated into Backup Exec software. There is no need to know which files are open ahead of time; just set a scheduled backup to use this option with a simple mouse click. It can back up multiple volumes in one job while creating a snapshot of only one logical volume at a time. After the logical volume is snapped and backed up, the snapshot is deleted before the next logical volume is snapped. This feature increases the ability to meet the minimum quiet time needed to complete a snapshot. Advanced technology also makes it possible to detect and leverage alternate frozen image technologies such as Microsoft VSS on Windows Server 2003 or the Veritas Storage Foundation for Windows FlashSnap Option for increased application availability.

In the Windows Small Business Server 2003 R2 domain, Microsoft allows additional Exchange or SQL servers. Customers with a Small Business Server 2003 R2 media server running Backup Exec 11d for Windows Small Business Server (Premium or Standard Edition) can back up remote Exchange or SQL servers by purchasing Backup Exec 11d for Windows Servers Exchange or SQL Agent.



**NEW! Symantec Backup Exec System Recovery,
Windows Small Business Server Edition**

Symantec Backup Exec System Recovery 7.0 is the gold standard in complete Windows system recovery, allowing businesses and IT to recover from system loss or disasters in minutes, not hours or days. Helping IT administrators meet recovery time objectives, Backup Exec System Recovery provides fast, easy-to-use system restoration or full bare metal recovery to dissimilar hardware and even virtual environments for servers, desktops, or laptops. It also enables you to recover systems in remote, unattended locations.

Backup Exec System Recovery captures a recovery point of the entire live Windows system—including operating system, applications, system settings, configurations, and files—without affecting productivity. This recovery point can be conveniently saved to various media or disk storage devices including SAN, NAS, Direct Attached Storage, RAID, and CD/DVD. When systems fail, you can quickly restore them without the need for manual, lengthy, and error-prone processes.

Extending your recovery capabilities even further, Backup Exec System Recovery, Windows Small Business Server Edition, also includes the Exchange Retrieve option, which quickly restores individual Microsoft Exchange email messages, folders, and mailboxes. It also integrates with Google Desktop as well as Backup Exec Retrieve for simple end-user file recovery that does not require IT intervention.

For more information, please visit www.backupexec.com.

Additional Backup Exec features

Backup and restore

- Support for Microsoft Windows Small Business Server 2003 R2 Standard Edition
- Support for Microsoft Windows Small Business Server 2003 Standard Edition
- Support for Microsoft Windows Small Business Server 2003 R2 Premium Edition
- Support for Microsoft Windows Small Business Server 2003 Premium Edition

- Support for Microsoft Windows Small Business Server 2000
- Continuous protection of file and Exchange data
- Individual mail message restore
- Single-pass recovery of SQL Server
- One-button backup capability
- Comprehensive workstation protection and recovery
- Desktop and laptop data protection and recovery
- Remote system management capabilities
- Environment check utility for the proper system configuration
- CA ARCserve tape read capability

Report generation

- New custom reporting engine: Create custom reports using queries and expressions, choosing fields, categories, and sort order.

Other features

- WORM tape and Iomega Rev Disk support
- Microsoft Storage Server 2005 support
- Reduced administration time
- Include/exclude file selection
- Onscreen progress and status indicators
- User-configurable alerts
- Automatic job retry
- Scheduled job “test run”
- Single-drive library support
- 100 percent compatible with Microsoft tape format
- Software compression
- Hardware compression
- Backup to disk
- Specified backup NIC
- Windows SharePoint Services support via Volume Shadow Copy Service “Writer” integration



Languages

English, French, German, Italian, Japanese, Simplified Chinese, Spanish

Operating system

- Microsoft Windows Small Business Server 2000 (with Service Pack 4)
- Microsoft Windows Small Business Server 2003 (with Service Pack 1)
- Microsoft Windows Small Business Server 2003 R2

Included agents/options

- Backup Exec Agent for Microsoft Exchange Server
- Backup Exec Agent for Microsoft SQL Server
- Backup Exec Intelligent Disaster Recovery Option
- Backup Exec Open File Option for Small Business Server
- Backup Exec Desktop and Laptop Option

Client support

Microsoft Windows Vista, Windows XP, Windows 2000 Professional, Windows NT® 4.0 Workstation, Windows Me, Windows 98

Internet browser

Microsoft Internet Explorer 6.0 or later. Service Pack 1 is required for SQL Server 2005 Express.

Processor

Intel Pentium or Intel Xeon, AMD, or compatible

Memory

- Required: 256 MB of RAM
- Recommended: 512 MB of RAM (or more for better performance)

Note: RAM requirements may vary depending on the operations performed, the options installed, and the specific computer configuration.

- For the Central Admin Server Option: 512 MB of RAM required, 1 GB recommended.
- Virtual memory recommendations: 20 MB above the Windows recommended size for total paging file size (total for all disk volumes).

Disk space

- 696 MB (typical installation)
- 805 MB (includes all options)

Note: Disk space requirements may vary depending on the operations performed, the options installed, and the specific system configuration. Backup Exec database and catalogs require additional space.

Virtual memory

- 20 MB above the Windows recommended size for total paging file size (total for all disk volumes)

Other hardware

- Network interface card or a virtual network adapter card
- CD-ROM drive
- Recommended: A mouse
- Optional for pager notification: Modem supported by Windows
- Optional for printer notification: Printer supported by Windows

Storage hardware

Backup Exec requires at least one storage media drive or single-drive robotic library and the appropriate controller card. You can also use removable storage devices and nonremovable hard drives. For a complete list of supported devices, refer to the Backup Exec hardware compatibility list at http://support.veritas.com/menu_ddproduct_bewnt_view_cl.htm. Support for a single robotic library drive is available when you purchase Backup Exec. To enable support for additional robotic library drives, you must purchase the Backup Exec Library Expansion Option.

More information

Visit our Web site

<http://enterprise.symantec.com>

To speak with a Product Specialist in the U.S.

Call toll-free 1 (800) 745 6054

To speak with a Product Specialist outside the U.S.

For specific country offices and contact numbers, please visit our Web site.

About Symantec

Symantec is a global leader in infrastructure software, enabling businesses and consumers to have confidence in a connected world. The company helps customers protect their infrastructure, information, and interactions by delivering software and services that address risks to security, availability, compliance, and performance. Headquartered in Cupertino, Calif., Symantec has operations in 40 countries. More information is available at www.symantec.com.

Symantec World Headquarters

20330 Stevens Creek Boulevard

Cupertino, CA 95014 USA

+1 (408) 517 8000

1 (800) 721 3934

www.symantec.com

