

Symantec Backup Exec™ 12 for Windows® Small Business Server—Premium and Standard Editions

Comprehensive data protection and system recovery for Microsoft® Windows Small Business Server

Today's small businesses require the same leading-edge technology as large businesses to be successful and stay ahead of the competition. Their challenge is to implement these state-of-the-art solutions at a fraction of the cost and complexity using limited resources.

Symantec Backup Exec 12 for Windows Small Business Server is the perfect data protection solution for Microsoft Windows Small Business Server Standard and Premium Editions. This robust solution provides backup, restore, and single-drive library support.

Included is protection for Microsoft Exchange Server, SQL Server (Premium Edition only), Open File Protection, and standard disaster recovery features. Backup Exec also provides faster, more flexible backup and recovery of Exchange servers through patent-pending Granular Recovery Technology. Not only can Exchange be backed up while online, but you can also recover individual messages or mailboxes in seconds—eliminating Exchange mailbox backups, reducing backup and recovery times, and utilizing less storage.

Backup Exec 12 for Windows Small Business Server includes continuous protection for file servers and desktops and laptops. Whether in the office or on the road, users can easily restore their own files. Plus Backup Exec 12 for Windows Small Business Server also includes Advanced Open File Protection and Intelligent Disaster Recovery for Small Business Server systems, improving overall data and

system recovery. Also users can easily scale and enhance their data protection with the latest Backup Exec 12 for Windows Server agents and options, providing robust storage management tools and extensive application support for growing and upgrading capabilities, as well as protection for remote Windows and non Windows OS servers.

Symantec Backup Exec 12 for Windows Small Business Server provides exceptional value at a low price. Best of all, the products are easy to install and manage making Backup Exec 12 for Windows Small Business Server the gold standard in data protection.

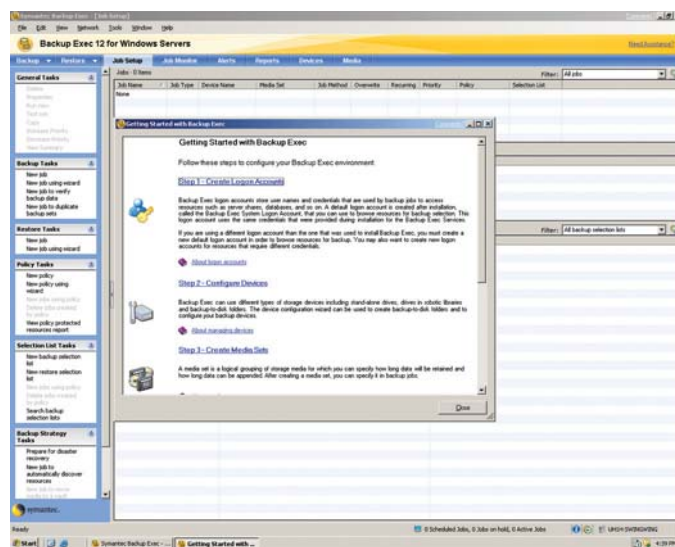


Figure 1. A graphical user interface helps ease installation, simplify backup and recovery administration, and consolidate management operations into a single console.

Data Sheet: Backup and Recovery

Symantec Backup Exec™ 12 for Windows® Small Business Server—Premium and Standard Editions

Key benefits

- Comprehensive data protection and recovery for Microsoft Windows Small Business Server 2000 and 2003—Standard and Premium Editions (including Microsoft Windows Small Business Server 2003 R2 Standard and Premium Editions)
- Proven, trusted, and reliable data protection and recovery solution
- Fast backups and restores of Exchange Server, SQL Server, and Windows SharePoint® Services
- Includes data protection and recovery for desktops and laptops
- NEW! Includes Advanced Open File Protection (AOFO) for Agent for Windows
- Includes FIPS validated 256-bit AES encryption (pending CMVP validation) for flexible data encryption across the network or to a storage device
- Supports 64-bit environments for better performance
- Easy setup and simplified management through user-friendly wizards
- Includes standard tape-based disaster recovery of your entire system

Product highlights

- **Designed specifically for Windows-based organizations**—Backup Exec 12 for Windows Small Business Server has been designed and priced specifically for the Windows Small Business Server customer.
- **Cost-effective and comprehensive data protection and recovery solution**—Backup Exec software's Small Business Server Premium and Standard Editions provide granular and fast data protection and recovery for Windows Small Business Server 2000 and 2003 in

one comprehensive suite. Core functionality includes database agent technology for protecting Exchange Server and SQL Server as well as Advanced Open File Protection for the Small Business Server.

- **NEW! Symantec Endpoint Protection integration**—now Symantec Endpoint Protection 11.0 users can view up-to-the-minute security threat reports through the Backup Exec console and also set proactive backup jobs to be automatically triggered to run, based on a Symantec ThreatCon level. Proactive ThreatCon backups help ensure an “uninfected” copy of business data is backed up and can be recovered in the event of a virus or malware attack.
- **NEW! Data protection for SharePoint Server and SharePoint Services**—Backup Exec for Windows Small Business Server now protects and recovers critical SharePoint and SharePoint Services data in seconds with Granular Recovery Technology, included in the Backup Exec Agent for Microsoft SharePoint.
- **Enhanced! Agent for Microsoft Active Directory**—The enhanced agent enables fast recovery of Active Directory user accounts, printers, and organizational units (OUs) down to the individual attribute level without Domain Controller reboots, and it now supports granular recovery of Microsoft Windows Server 2008 Active Directory Domain Services objects as well.
- **FIPS Validated 256-bit AES Encryption**—Backup Exec for Windows Small Business Server now includes FIPS validated 256-bit AES encryption (pending CMVP validation) to protect data as it is backed up to tape or disk on the Small Business Server or as the data moves across the network from a remote server. Administrators can specify which data backup jobs are to be encrypted,

Data Sheet: Backup and Recovery

Symantec Backup Exec™ 12 for Windows® Small Business Server—Premium and Standard Editions

allowing users to encrypt only sensitive data or data copies intended for offsite storage.

- **NEW! Data protection for non Microsoft environments**—Backup Exec for Windows Small Business Server provides support for remote Linux®, UNIX, NetWare®, and Mac® environments, extending data protection beyond Windows.
- **Proven and trusted solution**—Be confident that you are covered all the time by deploying this proven and trusted certified backup and recovery solution in your environment. This robust, multistage, disk-based backup solution also includes a breadth of notifications of job success and failures.
- **Fast backups and restores**—Disk- and tape-based data protection and recovery enable fast and reliable backups and restores.
- **Ease of use**—An enhanced install wizard helps ensure fast and successful installations. A Web-based administration console, new policy wizard, and the Backup Exec assistant enable easy management and improve the overall customer experience.
- **Enhanced! Faster, flexible backup and restore management of online Exchange servers**—Restore individual messages or mailboxes without having to run an additional Exchange mailbox backup. Granular Recovery Technology allows users to run a full, incremental, or continuous backup and to restore quickly down to a granular level, from a single backup, including down to an individual email—overall providing fast, efficient recovery of Exchange servers.

- **Includes Open File Protection**—Improves data protection and recovery by protecting open files on Small Business Server and on the Backup Exec Agent for Windows Systems
- **Includes desktop and laptop data protection and recovery**—Enables continuous disk-based protection and synchronization for users that are in the office or on the road. Designed to automatically copy user data to existing network shares or storage, this protection allows quick recovery of data by the administrator or user for optimum efficiency. The new push-install functionality from within Backup Exec streamlines deployment, and user-specific backup reports improve data and service-level visibility.
- **Continuous data protection and recovery for Windows file servers and remote Exchange and SQL servers**—Continuous disk-based data protection and recovery helps eliminate backup windows by backing up critical data continuously, overall improving data protection efficiency.
- **Disaster recovery of the entire environment**—Provides basic system backup and recovery at no extra cost, eliminating the need to reload the entire operating system of crashed servers. It includes the ability to create system-specific recovery media for protected systems even after a system crashes.
- **NEW! Integrated 60-day Trialware of Agents and Option**—Through the Backup Exec 12 console, easily download and evaluate all Backup Exec Agents and Options in your current Backup Exec 12 for Windows Small Business Server environment for 60 days absolutely free. Then before the trialware period expires, simply purchase and install the license keys for the agents or options you want to permanently extend. No reinstall or new configuration is necessary.

Included agents and options

Agent for Microsoft Exchange Server

Eliminate Exchange mailbox (MAPI) backups and still restore individual messages or mailboxes in seconds with the latest Backup Exec Granular Recovery features. This fast and flexible technology protects vital Exchange Server 2000, 2003, and 2007 data while the application is online. The agent provides full, incremental, or differential backup and restore of embedded objects, attributes, and all Microsoft Outlook® components. Restore can automatically mount the database upon completion of backups, helping ensure that the valid database is brought back online quickly. The Single Instance Storage feature eliminates backup of duplicate information by storing only the first instance of attachments distributed to multiple mailboxes, which reduces backup and recovery time as well as storage needed on disk or tape media.

In addition, users can run continuous data protection for remote Exchange servers, eliminating the backup window by continuously protecting data as it changes and helping ensure businesses can meet strict recovery point objectives.

Agent for Microsoft SQL Server

Integrated with SQL Server 2005, this agent helps ensure that business-critical databases and e-business data are protected in the event of application- or hardware-based corruption or loss. It provides SQL Server 7.0, SQL Server 2000, and SQL Server 2005 users with granular protection down to the individual database or file group. Execute differential backups as well as Transaction Log backups with automatic truncation. New integration with SQL Server 2005 snapshots means quick restores of SQL Server 2005 snapshots in seconds. Also, restore with one-pass recovery

of the last full backup and any subsequent backup as a single restore job; or perform “rollback restores,” enabling a database to be recovered to a specific moment in time rather than a specific restore point, based on the last backup job. Virtual Device Interface (VDI) support gives you the most dependable and fastest method available for comprehensive SQL Server protection. The agent supports Microsoft Volume Snapshot Service (VSS) technology to create point-in-time, recovery-consistent snapshots of SQL Server 2000 and SQL Server 2005 on Windows Server 2003. Consistency checks can be performed before backup when using Microsoft VSS snapshot provider.

Advanced Open File Option for Windows Server

Included at no additional charge, this option helps ensure that files on the Small Business Server are protected even while in use. The Backup Exec Advanced Open File Option handles open files at the volume level and is seamlessly integrated into Backup Exec software. There is no need to know which files are open ahead of time; just set a scheduled backup to use this option with a simple mouse click. It can back up multiple volumes in one job while creating a snapshot of only one logical volume at a time. After the logical volume is snapped and backed up, the snapshot is deleted before the next logical volume is snapped. This feature increases the ability to meet the minimum quiet time needed to complete a snapshot. Advanced technology also makes it possible to detect and leverage alternate frozen image technologies such as Microsoft Volume Snapshot Service on Windows Server 2003 or the Veritas Storage Foundation™ for Windows FlashSnap™ Option for increased application availability.

Desktop and Laptop Option

Most businesses rely on users to manually copy business-critical data to a server. When users do not comply, the majority of business-critical information residing on employee workstations, desktops, and laptops does not get protected. Now including up to seventy-five licenses at no additional charge and with support for Windows Vista®, the Desktop and Laptop Option delivers continuous data protection and recovery to desktops and laptops whether in the office or on the road. In addition to improving data protection and efficiency, this option enables users to restore their own files and maintains synchronization between multiple desktops and laptops, so the most up-to-date file versions are available on all of a user's computers. Because the Desktop and Laptop Option does not require a dedicated stand-alone server as competing products do, it easily integrates into existing IT infrastructure and policies, helping lower the total cost of ownership. The new push-install functionality from within Backup Exec centralizes deployment. This version also allows the use of expanded Global Exclude options to specify the attributes of files that you want to exclude from backups or that you do not want to compress, encrypt, or back up with delta file transfer. You can also exclude attachments to emails or specific email folders from backup jobs.

Intelligent Disaster Recovery Option

This basic system recovery solution saves recovery time by automating the traditional manual, error-prone process. The Backup Exec Intelligent Disaster Recovery (IDR) Option automates server recovery, reducing the time to recover, and gets you back into business quickly. Implement a server recovery solution for both local and remote Windows servers, eliminating the need to first reload the entire

operating system of crashed servers. Using either diskette-based, CD-R/CD-RW, or bootable tape, the IDR Option quickly recovers downed servers and workstations, enabling restores from the last complete backup set, including full, differential, incremental, and working set backups. It integrates directly with Microsoft Automated System Recovery (ASR) functionality in Windows Server 2003 and Windows XP to provide complete disaster recovery on Windows servers. With Offline Protection functionality, even when a computer crashes before administrators create disaster recovery media, IDR can still recover the computer using a full backup made prior to the crash that includes information needed to restore the system.

For customers requiring advanced disk-based disaster recovery, we recommend you learn more about Backup Exec System Recovery for Windows Small Business Server highlighted on (page 7).

Featured Small Business Server agents and options sold separately

Library Expansion Option

Scale the media storage system by leveraging additional drives within multidrive tape or optical autoloader/library storage systems. This option leverages Backup Exec Advanced Device and Media Management (ADAMM) technology to provide extensive configuration and management capabilities, including "lights-out" backup and restore operations, bar code reader, and portal support for both SCSI and fiber-attached devices. You can partition slots within libraries to target backup jobs to a specific slot.

Agent for Microsoft SharePoint Server and SharePoint Services

Now recover critical SharePoint data in seconds with the enhanced Agent for Microsoft SharePoint. This agent supports Microsoft Office SharePoint Server 2007 and Microsoft SharePoint Portal Server 2003, as well as Windows SharePoint Services 2.0/3.0. This agent leverages the innovative Granular Recovery Technology (GRT), which helps IT administrators save time and money by giving them the ability to restore individual documents from a single-pass database backup. Granular Recovery Technology allows IT administrators to restore critical documents to the original document library in the SharePoint farm or to redirect restore of documents to the file system.

Agent for Microsoft Active Directory

Recover critical Active Directory data in seconds with this new agent. The Symantec Backup Exec 12 Agent for Active Directory Recovery Option allows you to restore Active Directory or Active Directory Application Mode (ADAM) objects, including deleted user accounts, and individual attributes online without having to perform an offline authoritative or nonauthoritative full Active Directory restore. With the importance of Active Directory in today's Windows environments, protecting it is now simpler.

Agent for Windows Systems (includes Continuous Protection Agent, Advanced Open File Option, and Intelligent Disaster Recovery Option)

The bundled Agent for Windows expands network-wide data protection and optimizes data transfers for 32- and 64-bit remote Windows servers, including local registry and system state information. Exclusive Agent Accelerator

technology maximizes backup and recovery performance by providing source-level compression and distributed processing at the client. The result is reduced network traffic and maximized data throughput.

The Agent for Windows includes the functionality of the Continuous Protection Agent, delivering continuous disk-based data protection for remote file servers with LAN or WAN connectivity to the Backup Exec Continuous Protection Server. It simplifies backups by consolidating data protection and recovery into a central server, eliminates the backup window needed to protect each file server, and provides faster restores by helping to ensure that business-critical data is immediately accessible. Point-in-time snapshots of data on the Continuous Protection Server are periodically captured and protected to provide versioning and granular point-in-time recovery of files. Full system state information is also protected. You can seamlessly retrieve previous versions of files using Backup Exec Retrieve, a simple Web-based recovery tool.

Plus the Agent for Windows now includes Advanced Open File Option and Intelligent Disaster Recovery Option to ensure protection of open files and provide remote servers with standard tape-based disaster recovery for complete data and system protection.

NEW! Scalability with Backup Exec Agents for Remote Servers

Backup Exec 12 for Windows Small Business Server now supports a broad portfolio of high-powered agents to extend your data protection across other operating systems and applications. Growing businesses can build on their current Backup Exec for Windows Small Business Server

Data Sheet: Backup and Recovery

Symantec Backup Exec™ 12 for Windows® Small Business Server—Premium and Standard Editions

protection and now support remote Linux, UNIX, NetWare, and Mac environments, extending data protection beyond Windows. For a complete list of agents and options now supported by Backup Exec *for Windows Small Business Server*, please view the complete list of *Available Agents and Options* at the end of the data sheet.

In the Windows Small Business Server 2003 R2 domain, Microsoft supports additional Exchange or SQL servers. Customers with a Small Business Server 2003 R2 media server running Backup Exec 12 *for Windows Small Business Server* (Premium or Standard Edition) can back up remote Exchange or SQL servers by purchasing Backup Exec 12 *for Windows Servers Exchange or SQL Agent*.

Symantec Backup Exec System Recovery, Windows Small Business Server Edition

Symantec Backup Exec System Recovery 8 *for Windows Small Business Server Edition* is the gold standard in complete Windows system recovery, allowing businesses and IT to recover from system loss or disasters in minutes, not hours or days. Helping IT administrators meet recovery time objectives, Backup Exec System Recovery provides fast, easy-to-use system restoration or full bare metal recovery to dissimilar hardware and even virtual environments for servers, desktops, or laptops. It also enables you to recover systems in remote, unattended locations.

Backup Exec System Recovery captures a recovery point of the entire live Windows system—including operating system, applications, system settings, configurations, and files—without affecting productivity. This recovery point can be conveniently saved to any disk storage devices, including SAN, NAS, Direct Attached Storage, RAID, and CD/DVD. When systems fail, you can quickly restore them

without the need for manual, lengthy, and error-prone processes.

For more information, please visit www.backupexec.com.

Available products

Core license

Backup Exec 12 *for Windows Small Business Server* (Standard)

Backup Exec 12 *for Windows Small Business Server* (Premium)

Included agents/options

- Backup Exec Agent for Microsoft Exchange Server—one license
- Backup Exec Agent for Microsoft SQL Server (Premium only)—one license
- Backup Exec Intelligent Disaster Recovery Option
- Backup Exec Advanced Open File Option
- Backup Exec Desktop and Laptop Option—up to 75 licenses

Additional agents and options

Backup Exec 12 Agents and Options are now supported on Backup Exec 12 *for Windows Small Business Server* environments (*except CASO and SSO*)—easily expand and scale the Backup Exec environment to support critical applications, databases, and storage configurations.

Backup Exec Agents

- Symantec Backup Exec Agent for Active Directory®
- Symantec Backup Exec Agent for Microsoft SharePoint
- Symantec Backup Exec Agent for Microsoft Exchange Server (one license included)

Data Sheet: Backup and Recovery

Symantec Backup Exec™ 12 for Windows® Small Business Server—Premium and Standard Editions

- Symantec Backup Exec Agent for Microsoft SQL Server (one license included with Premium)
- Symantec Backup Exec Agent for Windows Systems (AWS)
Symantec Backup Exec Remote Agent for Linux or UNIX Servers
- Symantec Backup Exec Remote Agent for Macintosh® Servers
- Symantec Backup Exec Remote Agent for NetWare Servers
- NEW! Symantec Backup Exec Agent for Enterprise Vault
- Symantec Backup Exec Agent for Oracle® RAC on Windows or Linux Servers
- Symantec Backup Exec Agent for Oracle on Windows and Linux Servers
- Symantec Backup Exec Agent for SAP Applications
- Symantec Backup Exec Agent for DB2® on Windows Servers
- Symantec Backup Exec Agent for Lotus Domino® Server

Backup Exec Options

- Symantec Backup Exec Advanced Disk-based Backup Option
- Symantec Backup Exec Library Expansion Option
- Symantec Backup Exec NDMP Option

Complimentary advanced system protection

Symantec Backup Exec System Recovery 8 for Windows Small Business Server Edition

Support Services

Essential Support

No matter the size of your company, a service interruption can mean significant loss to your business. Symantec recommends Essential Support Services as the service level of protection for most businesses.

- Reassurance of knowing your Backup Exec products are up to date with the latest updates and version releases
- Cost savings that come with selecting a value-priced service plan
- 24x7 expert problem resolution through Symantec's global support and delivery team

For more information on Backup Exec Support Services:

<http://go.symantec.com/backupexecservices>

System requirements

Operating system

- Microsoft Windows Small Business Server (SBS) 2003 (SP1) Premium and Standard Editions
- Microsoft Windows Small Business Server (SBS) 2003 R2 Premium and Standard Editions
- Microsoft Windows Small Business Server (SBS) 2000 (SP4)

Client support

Microsoft Windows Vista®, Windows XP, Windows 2000 Professional, Windows NT® 4.0 Workstation, Windows Me, Windows 98

Internet browser

Microsoft Internet Explorer® 6.0 or later. Service Pack 1 is required for SQL Server 2005 Express.

Data Sheet: Backup and Recovery

Symantec Backup Exec™ 12 for Windows® Small Business Server—Premium and Standard Editions

Processor

Intel® Pentium® or Intel Xeon™, AMD, or compatible 32-bit and 64-bit, or x86 compatible processors supported

Memory

- Required: 512 MB of RAM
- Recommended: 1 GB of RAM (for better performance)

Note: RAM requirements may vary depending on the operations performed, the options installed, and the specific computer configuration.

Disk space

- 696 MB (typical installation)
- 805 MB (includes all options)

Note: Disk space requirements may vary depending on the operations performed, the options installed, and the specific system configuration. Backup Exec database and catalogs require additional space.

Virtual memory

20 MB above the Windows recommended size for total paging file size (total for all disk volumes)

Other hardware

- Network interface card or a virtual network adapter card
- CD-ROM drive
- Recommended: a mouse
- Optional for pager notification: modem supported by Windows
- Optional for printer notification: printer supported by Windows

Storage hardware

Backup Exec requires at least one storage media drive or single-drive robotic library and the appropriate controller card. You can also use removable storage devices and nonremovable hard drives. For a complete list of supported devices, refer to the Backup Exec hardware compatibility list at <http://www.backupexec.com/compatibility>. Support for a single robotic library drive is available when you purchase Backup Exec. To enable support for additional robotic library drives, you must purchase the Backup Exec Library Expansion Option.

Data Sheet: Backup and Recovery

Symantec Backup Exec™ 12 for Windows® Small Business Server—Premium and Standard Editions

More information

Visit our Web site

<http://enterprise.symantec.com>

To speak with a Product Specialist in the U.S.

Call toll-free 1 (800) 745 6054

To speak with a Product Specialist outside the U.S.


For specific country offices and contact numbers, please visit our Web site.

About Symantec

Symantec is a global leader in infrastructure software, enabling businesses and consumers to have confidence in a connected world. The company helps customers protect their infrastructure, information, and interactions by delivering software and services that address risks to security, availability, compliance, and performance. Headquartered in Cupertino, Calif., Symantec has operations in 40 countries. More information is available at www.symantec.com.

Symantec World Headquarters

20330 Stevens Creek Boulevard
Cupertino, CA 95014 USA
+1 (408) 517 8000
1 (800) 721 3934
www.symantec.com

Confidence in a connected world.  symantec™

Copyright © 2007 Symantec Corporation. All rights reserved. Symantec, the Symantec Logo, Backup Exec, FlashSnap, Veritas, and Veritas Storage Foundation are trademarks or registered trademarks of Symantec Corporation or its affiliates in the United States and other countries. Mac, Mac OS, and Macintosh are trademarks of Apple Inc., registered in the United States and other countries. DB2, Lotus, and Domino are trademarks of IBM Corporation. Intel and Pentium are trademarks or registered trademarks of Intel Corporation or its subsidiaries in the United States and other countries. Linux is the registered trademark of Linus Torvalds in the U.S. and other countries. Microsoft, Microsoft Outlook, SharePoint, Windows, Windows NT, Windows Server, Windows Vista, and Active Directory are either registered trademarks or trademarks of Microsoft Corporation in the United States and/or other countries. NetWare is a registered trademark of Novell, Inc., in the United States and other countries. Oracle is a registered trademark of Oracle Corporation and/or its affiliates. Sun and Solaris are trademarks or registered trademarks of Sun Microsystems, Inc. in the United States and other countries. Other names may be trademarks of their respective owners. Printed in the U.S.A.

12/07 12001749-1