

SYMANTEC ENTERPRISE VAULT PROTECTION CHALLENGES

The Symantec Enterprise Vault is a critical part of many corporations's data retention and classification policies. Today, backup and recovery of the Enterprise Vault infrastructure is the result of a combination of Backup Exec Agents and scripts or batch files requiring hours of time and expertise to configure. For many administrators, this can be an inherently challenging process that becomes more difficult as Vault Stores and partitions grow and demands on their availability increase, limiting the time available for backup and recovery operations.

Enterprise Vault is a comprehensive and full-featured application that combines both database and file system storage locations for archived data. Many Vaults can be very large and backup and recovery of these systems can be challenging. A backup and recovery solution must reduce downtime and provide efficiency and speed to support simple and complex Enterprise Vault environments.

Symantec Enterprise Vault protection challenges include:

- Backup administrators often require detailed knowledge of Symantec Enterprise Vault scripting and Backup Exec to execute backup and recovery operations.
- Enterprise Vault installations are often administered by different groups or people.
- Enterprise Vault is a very distributed application; differing parts of the Enterprise Vault infrastructure can exist throughout the network.

SETTING THE STANDARD FOR ENTERPRISE VAULT PROTECTION

The Symantec™ Backup Exec 12.5 Agent for Symantec Enterprise Vault offers the first comprehensive backup and recovery package for business-critical Enterprise Vault installations. The ability to automatically place Enterprise Vault databases and Vault Stores into backup mode, coupled with automatic detection of many aspects of the Enterprise Vault infrastructure to complete database and file system backup and recovery, make this a sophisticated and straightforward single-agent approach to data protection.

Backup Exec 12.5 leverages the capabilities and technologies of Enterprise Vault to provide complete protection of the Enterprise Vault infrastructure including:

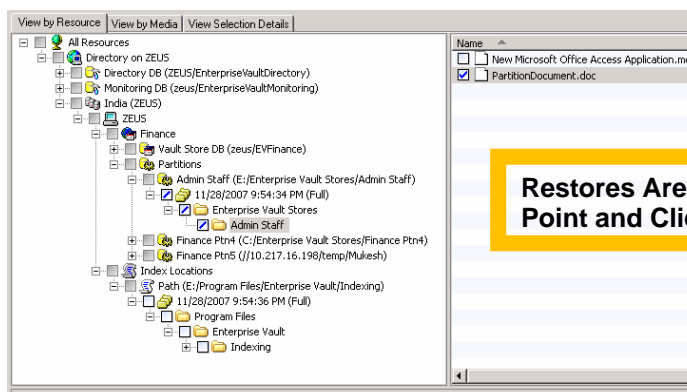
- Integrating with Enterprise Vault to automatically view all of Enterprise Vault components that exist on each server system where the Agent is installed for fast configuration
- Implicit protection of Vault Store databases and associated partitions – when a Vault Store is selected for backup, the associated partitions are automatically selected as well, keeping the Vault Store databases and partitions in sync to quickly and efficiently protect Enterprise Vault archive.
- Automatically enables Enterprise Vault's backup mode when backups start, and turns off backup mode when backups are complete
- Comprehensive restore capability, from entire Vault Stores and Partitions down to an individual file or index.

Key Business Benefits

- Supports Enterprise Vault 7.01 and 7.01 SP1
- Offers flexible restore options for entire Enterprise Vault installations down to individual files from partitions and indexes
- Single point of management for all Enterprise Vault protection and recovery operations

Platform Support

- Microsoft Windows Server 2003 Family (including R2 versions) on x86 and x64 platforms.
- Windows Server 2000 Family on x86 platforms
- NetApp/EMC NDMP devices (as partitions)



FEATURES AND BENEFITS

Automatic Component Detection	When the Backup Agent is installed on an Enterprise Vault system, many of the Enterprise Vault components are automatically discovered and are presented as discrete items for backup.
Implicit Protection of Vault Stores and Partitions	Recovering from a disaster is made easier because the Agent will ensure Vault Store Databases and Partitions are backed up and recovered at the same time.
Automatic Backup Mode	Backup Exec 12.5 Agent for Enterprise Vault eliminates the need for scripting by automatically placing Enterprise Vault in Backup Mode for the duration of the backup.
Flexible and Granular recovery options	With Backup Exec 12.5's Agent for Enterprise Vault, the Administrator can recover the entire Enterprise Vault infrastructure or a single partition file or index.
Single Agent Protection	Backup Exec 12.5 combines all the functions necessary to backup and recover Enterprise Vault in a single Agent.

BACKUP EXEC AGENT FOR ENTERPRISE VAULT LICENSING

Backup Exec Agent for Enterprise Vault is licensed per Enterprise Vault server. Backup Exec 12.5 for Windows Servers is designed to accommodate the needs of Windows-based environments of all sizes— whether it's a single Windows Server or a large, multi-Domain Windows enterprise including multiple remote Linux and UNIX servers. The Backup Exec 12.5 Windows Server portfolio provides a wide array of high powered Agents and Options which are licensed on a per-Server or per-storage device for added scalability, supporting all Windows 2000, 2003 and 2008 environments, physical or virtual servers, and unlimited processors on the system

Scenarios	Customer Environment	Licensing
Protecting a Single-Server Enterprise Vault configuration	1 Media Server 1 Enterprise Vault Server Directory, Monitoring, and Vault Store databases, and local partitions	Qty:1 of Backup Exec 12.5 for Windows Server license Qty:1 of Backup Exec 12.5 Agent for Enterprise Vault
Protecting multiple Vault Stores on different Windows computers	1 Media Server 1 Enterprise Vault Server with Directory, Monitoring, and Vault Store Databases Five Windows Servers with Vault Store partitions and index locations	Qty:1 of Backup Exec 12.5 for Windows Server license Qty:6 of Backup Exec 12.5 Agent for Enterprise Vault

INTEGRATED DATA PROTECTION

Symantec Backup Exec 12.5 for Windows Servers can be expanded to protect additional remote systems and applications through the purchase additional Agents and Options which enable administrators to design and easily implement a comprehensive data and system protection solution for any Windows server environment. Other Backup Exec 12.5 agents & options that compliment the Backup Exec Enterprise Vault include:

• Agent for Windows Servers	• Advanced Disk-based Backup Option	• Central Admin Server Option
• Agent for Exchange Servers	• SAN Shared Storage Option	• Agent for Lotus Notes Servers

FOR MORE INFORMATION

Symantec Enterprise Sales Support: 800-745-6054
Backup Exec on the Symantec Web Site : <http://www.backupexec.com>