

# Symantec Enterprise Vault™ Discovery Accelerator

Accelerate e-discovery and simplify review

---

## Overview

Symantec Enterprise Vault™ Discovery Accelerator extends the basic search functionality of Enterprise Vault email and file archiving to help lower the cost of data collection and preservation, and to facilitate the review and analysis of archived items in electronic discovery. The release of Discovery Accelerator provides significant enhancements, delivering a more powerful and efficient user interface through advanced search and analysis capabilities such as Guided Review, conversation threading and bulk marking and tagging. Relevant items are easily preserved and provided to the requesting party through a flexible export process to simplify production.

---

## Key Benefits

### *Instantly search across Enterprise Vault archives*

- Target all internal and/or external data, including email, files, attachments, and instant messages.
- Search metadata and full attachments, including close to 400 file types, using Boolean fields.
- Accelerate the search, culling and review process with de-duplication, Guided Review and bulk marking and tagging.
- Create and leverage multiple Discovery Accelerator databases for scalability, security, and segregation of data between authorized individuals or groups (e.g., Legal, HR).

### *Produce and export on demand*

- Export to native file system and message formats (including MSG, NFS, HTML, and PST) or to leading 3rd party review, analysis and case management applications and EDRM XML.
- Demonstrate due diligence and maintain markings for privileged and non-responsive items with a full audit trail.

### *Intuitive, event-driven workflow and Guided Review*

- Organize and rapidly review search results using frequently occurring keywords, metadata and custom attributes to organize the result set and marking process using Guided Review.
  - Allow hierarchical initial review and case management by authorized reviewers/investigators with chain of custody tracking.
  - Review and mark individual items or result sets using customizable marks and tags (e.g., privileged, nonresponsive).
  - Apply legal holds for pending or open litigation to suspend deletion.
- 

### *Secure, hierarchical, audited search and production*

Discovery Accelerator allows authorized reviewers (e.g., corporate litigation, HR, external counsel) to quickly target and pinpoint specific email and files as part of litigation support, legal discovery, or internal investigation. With no IT dependencies for locating email from backup, Enterprise Vault Discovery Accelerator

provides a high level of organization and structure to the discovery process and enables content to be tracked, reviewed, and marked for either lead counsel examination or court-ready production. This helps reduce the cost of electronic discovery and internal investigations, because relevant email and files can be easily and quickly searched, preserved and reviewed. Built with scalability in mind to help search across petabytes of archived data, Discovery Accelerator is easily administered by IT and operated by legal and HR. It enables multiple databases to be created to optimize performance and secure the segregation of data between authorized individuals or groups as needed.

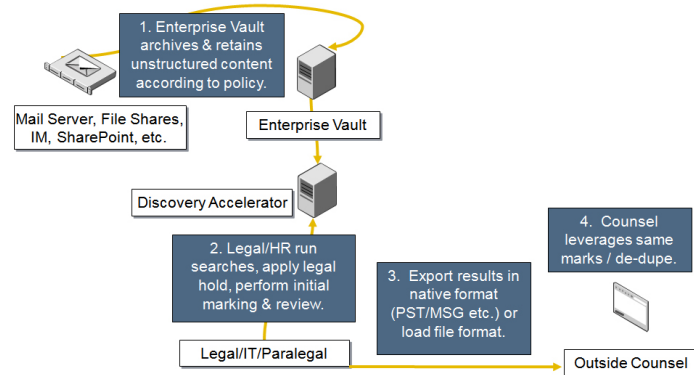


Figure 1. Enhance discovery process and productivity. Enterprise Vault enables automatic capture and retention of email and files.

### Flexible and efficient search options for attorneys and HR

Attorneys, HR reps, and other authorized personnel can leverage Discovery Accelerator to run enterprise wide searches across archived content on a case-by-case basis. Searches can be executed based on multiple criteria, including constituents, date range,

classification, and message and file content, utilizing Boolean fields and attachment types to shape results. Result sets can be quickly culled in the analysis phase through advanced search within a search, conversation threading and Guided Review. All searches can be scheduled and ad hoc investigative search folders can be used to organize items associated with case searches. This gives the organization options, secured by rights, to run preliminary and test searches; isolate proprietary content from case audit trails; or export selected item sets for review by outside counsel.

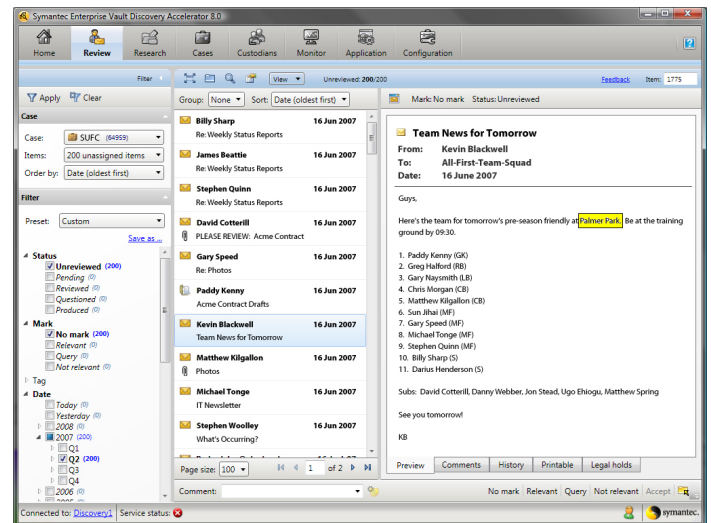


Figure 2. Discovery Accelerator provides flexible search options, scheduled searches and Guided Review to accelerate the early case assessment and discovery process.

### Initial review and marking of items

Multiple reviewers can be assigned the task of reviewing content generated by the Discovery Accelerator search. The reviewers can then mark items as being relevant to the search in hand or not relevant. The marks themselves can be permanently assigned to a message or groups of messages. This means that if a privileged message were to appear in another review process, it could be presorted.

---

### Apply legal hold to archived content

The user can automatically apply legal holds against archived data relevant to a case or multiple cases to ensure that they will not be deleted. Additionally, the system will automatically run scheduled searches to add any new content to the hold. Once the case is closed, users can quickly release all holds on a case-by-case basis and allow the documents to revert to their originally scheduled deletion dates.

---

### Flexible export and production

Discovery Accelerator automates the production of relevant items, so they are ready for disclosure to the body demanding the information. Through the flexible options within Discovery Accelerator, all items can be produced in their native original file formats, including Microsoft® Exchange MSG and PST format and Lotus® Domino® or Lotus Notes® NFS message formats, without having to open the original application. In addition cases can be exported from Discovery Accelerator in load file format to leading review, analytics and case

management tools such as Ringtail, Summation, Concordance, Attenex and EDRM XML.

---

### Improved search efficiencies through intelligent archiving

Applying context to archived content optimizes the discovery process. Symantec Enterprise Vault Automatic Classification Engine (ACE) software extends the existing capabilities of Enterprise Vault to include intelligent, content-based categorization and tagging of email. Specifically, automated classification enables Enterprise Vault to apply rules to email and to categorize messages according to content or context. This optional component can be leveraged in Discovery Accelerator to facilitate rapid search and review. Messages can be searched, and result sets organized by category, which provides an additional level with which to pinpoint and narrow the scope of information under investigation.

---

### Symantec Enterprise Vault

Enterprise Vault, the industry leader in email and content archiving, enables companies to store, manage, and discover unstructured information across the enterprise. Using a market proven architecture, Enterprise Vault provides an open, intelligent and manageable approach to improve management, reduce costs and control information risk. With unstructured information consuming a large percentage of corporate storage, Enterprise Vault archives information from messaging, file servers and collaborative systems using powerful storage optimization, classification and

## Data Sheet: Data System Protection Symantec Enterprise Vault™ Discovery Accelerator

retention technologies. Enterprise Vault will automatically capture, categorize, index and enforce retention policies and secure unstructured information while reducing storage costs and simplifying management.

---

### Product requirements

- Symantec Enterprise Vault 6.0 SP3 or later with basic configurable options for capturing targeted content (e.g., Microsoft Exchange or Lotus Domino Journaling)
- Dedicated Microsoft Windows Server® 2003 or Windows 2000 Server SP1 or later
- 2 GHz Intel® Xeon™ or better dual processor
- 2–4 GB RAM
- Localized clients: English and Japanese

Enterprise Vault allows customers to leverage existing storage platforms or implement more cost-effective storage specifically designed for archiving and long-term data retention. Storage options include:

- Direct attached storage (DAS)
- Storage area network (SAN), network attached storage (NAS)
- WORM devices and content addressable storage (CAS)
- DVD/Optical/Tape (using Veritas NetBackup™)

For a complete list of requirements and supported hardware and software, please visit [www.symantec.com](http://www.symantec.com).

### More information

*Visit our Web site*

<http://www.symantec.com/ev>

*To speak with a Product Specialist in the U.S.*

Call toll-free 1 (800) 745 6054

*To speak with a Product Specialist outside the U.S.*

For specific country offices and contact numbers, please visit our Web site.

### *About Symantec*

Symantec is a global leader in providing security, storage, and systems management solutions to help businesses and consumers secure and manage their information. Headquartered in Cupertino, Calif., Symantec has operations in more than 40 countries. More information is available at [www.symantec.com](http://www.symantec.com).

### *Symantec World Headquarters*

20330 Stevens Creek Blvd.

Cupertino, CA 95014 USA

+1 (408) 517 8000

1 (800) 721 3934

[www.symantec.com](http://www.symantec.com)

Confidence in a connected world.

