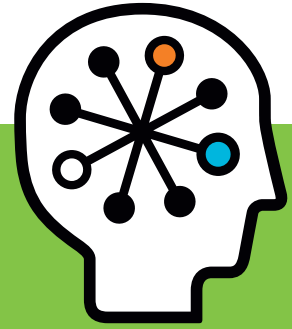




HP Hardware Support Onsite Service

HP Care Pack Services



HP Hardware Support Onsite Service provides highquality remote assistance and onsite support for your covered hardware, helping to improve product uptime.

You have the flexibility to choose between different service-level options featuring different response times and coverage windows, as well as between several coverage periods, to address your specific service needs.

Optional preventative maintenance will help the Customer avoiding problems through the timely replacement of maintenance kits.

Service benefits

- Help improve system uptime
- Convenient onsite support
- Reliable response times

Service feature highlights

- Remote problem diagnosis and support
- Onsite hardware support
- Materials included
- Service-level options with different coverage windows and response times
- Work to completion
- Escalation management
- Access to electronic support information and services
- Electronic remote monitoring and support, standard configuration (for eligible products only)
- Preventative maintenance (optional on eligible products)

Specifications

Table 1. Service features

Feature	Delivery specifications
Remote problem diagnosis and support	<p>Once the Customer has placed a service request via a designated HP support telephone number, HP will work with the Customer during the coverage window to isolate the hardware problem and to remotely troubleshoot, remedy and resolve the problem. Prior to any onsite assistance, HP may initiate and perform remote diagnostics using electronic remote support tools (where available) to access covered products, or HP may use other means available to facilitate remote problem-resolution. Where necessary, onsite assistance will be provided by an authorized HP representative.</p> <p>Regardless of the Customer's coverage window, problems with covered hardware can be reported to the HP Response Centre via telephone or electronically, as locally available, 24 hours per day, seven days per week. HP will acknowledge the receipt of the service request and notify the local HP field office at the next coverage window. HP retains the right to determine the final resolution of all reported problems. Onsite response times or call-to-repair times, as applicable, for service requests submitted electronically or outside of the coverage window may vary.</p>
Onsite hardware support	<p>For technical hardware issues that cannot, in HP's judgement, be resolved remotely, an HP-authorized representative will provide onsite technical support on covered hardware products to return them to operating condition. For certain printers, PCs, ProLiant servers, Intel® Pentium® and Xeon® processor-based servers, and networking and storage products, HP may, at its sole discretion, elect to replace such products in lieu of repairing them. Replacement products are new or equivalent to new in performance. Replaced products become the property of HP.</p> <p>In addition, HP may install available engineering improvements to help the Customer ensure proper operation of the hardware products and maintain compatibility with HP-supplied hardware replacement parts. At its sole discretion, HP may install any firmware updates that, in the opinion of HP, are required to return the covered product to operating condition or to maintain supportability by HP.</p>
Parts and Materials	<p>HP will provide HP-supported parts and materials necessary to maintain the covered hardware product in operating condition, including parts and materials for available and recommended engineering improvements. Replacement parts are new or equivalent to new in performance. Replaced parts become the property of HP.</p> <p>If preventative maintenance is purchased HP will provide the maintenance kits.</p>

Feature	Delivery specifications
Coverage window	<p>The coverage window specifies the time during which the described services are delivered onsite or remotely. Service requests received outside this coverage window will be logged the next day for which the Customer has a service coverage window.</p> <p>Coverage window options available for eligible products are specified in the service-level options table. All coverage windows are subject to local availability. Contact a local HP sales office for detailed information on service availability.</p>
Onsite response time for hardware support	<p>Onsite response time specifies the period of time that begins when the initial service request is received and logged with HP and ends when the HP authorised representative arrives at the Customer's site within the coverage window. Response times are measured during the coverage window only and may be carried over to the next day for which there exists a coverage window. Response time options available for eligible products are specified in the service-level options table. All response times are subject to local availability. Contact a local HP sales office for detailed information on service availability.</p>
Preventative maintenance (optional)	<p>An HP-authorized representative will replace HP Products maintenance kits specified by HP. When your printer informs you that a replacement kit is needed, simply call your HP Authorised Reseller or the HP Customer Care Centre during normal business hours to request and schedule the Service. At an agreed time, an HP-trained technician will visit your site to replace the kit, clean the printer and provide you with a checklist of performed actions designed to maintain print quality.</p> <p>Your printer must be in proper operating condition before the kit can be installed.</p> <p>Following the replacement of the maintenance kit, the Service is complete when the technician successfully prints a test page.</p> <p>Maintenance kits can only be replaced by authorised HP-trained technicians.</p>
Work to completion	<p>Once an HP-authorized representative arrives at the Customer's site, the representative will continue to deliver the service, either onsite or remotely, at the discretion of HP, until the products are operational or as long as reasonable progress is being made. Work may be temporarily suspended if additional parts or resources are required, but work will resume when they become available.</p> <p>Work to completion may not apply to onsite support provided for desktop, mobile, printing and consumer products.</p>
Escalation management	<p>HP has established formal escalation procedures to facilitate the resolution of complex problems. Local HP management coordinates problem escalation, enlisting the skills of appropriate HP resources and/or selected third parties to assist with problem-solving.</p>
Access to electronic support information and services	<p>As part of this service, HP provides access to certain commercially available electronic and web-based tools. The Customer has access to:</p> <ul style="list-style-type: none"> • Certain capabilities that are made available to registered users, such as downloading selected HP software and firmware patches; subscribing to hardware-related proactive service notifications; and participating in support forums for solving problems and sharing best practices with other registered users • Expanded web-based searches of technical support documents, to facilitate faster problem-solving • Certain HP proprietary service diagnostic tools with password access • A Web-based tool for submitting questions directly to the HP Solution Center. The tool helps to resolve problems quickly with a pre-qualification process that routes the support or service request to the engineer qualified to answer the question. The tool also allows the status of each support or service request submitted to be viewed, including cases submitted by telephone • "HP Live", functionality for communication directly with an online HP support engineer during standard HP business hours (08.00 to 17.00 local time), Monday through Friday excluding HP holidays. Through sharing browser content, the HP support engineer will help navigate to the appropriate online content that may help resolve the problem. This real-time online help can be accessed via the "HP Live" button on selected web pages • Search of HP and third-party hosted knowledge databases for certain third-party products in order to retrieve product information, get answers to support questions, and participate in support forums
Electronic remote monitoring and support, standard configuration	<p>For Customers who meet minimum requirements, electronic remote monitoring and support, standard configuration with real-time remote hardware event management provides diagnostic software for eligible products. This software monitors hardware status and generates notification events when certain predetermined conditions are detected. Notification events are received and forwarded to HP for review and possible support action. With the Customer's authorisation, and at the sole discretion of HP, remote network access by an HP support engineer may be used for troubleshooting and faster problem-resolution.</p> <p>For details on the minimum requirements, the Customer may contact their local HP sales office.</p>

Specifications

Table 2. Optional service features

Feature	Delivery specifications
Desktop/Workstation/ Thin client/ Notebook- only coverage	For eligible PC products, the Customer may choose desktop/workstation/thin client/notebook-only coverage. HP Care Pack Services with this coverage does not extend the specified service level to the external monitor or docking station.
Page allowance	<p>For eligible printer products, service levels may be offered with page limits. Where page limits apply, the support coverage ends when either the Some printer products may be available with a maximum page allowance. Page count for any given printer is defined as the number of standard pages (printed or plain) that have passed through such printer's print engine, as recorded on the test page. Different paper sizes and print options may be associated with different standard page equivalent values in order to calculate the page count.</p> <p>For printers that require HP installation, the contract term begins on the date of installation of such printers at the Customer site.</p> <p>Where page allowances apply, the support coverage ends when either the end of the contract term has been reached or the page count has exceeded the maximum page allowance, whichever occurs first. Should the Customer exceed the maximum page allowance before the end of the contract term, any further services provided during the contract term will be billed at HP's then-current time and materials rate, unless another HP Care Pack has been purchased by the time the services are provided.</p>
Accidental damage protection	<p>For eligible products, specific service levels may be offered with accidental damage protection. Where accidental damage protection applies, the Customer receives protection against accidental damage to the covered hardware product as part of this service.</p> <p>Accidental damage is defined as physical damage to a product caused by or resulting from a fortuitous incident. Covered perils include nonintentional liquid spills in or on the unit, drops, falls and electrical surge. This includes damaged or broken liquid crystal displays (LCDs), or broken parts.</p> <p>Accidental damage protection does not cover theft, loss, fds fires, damage caused by a vehicle accident or act of God, normal wear, consumables, intentional acts of damage, or other exclusions, as detailed in the "Service limitations" section. Major parts replacement is subject to certain limitations as detailed in the "Service limitations" section.</p> <p>The unit may need to be repaired or replaced at an HP-designated location, since not all replacement parts may be available locally.</p>
Defective media retention	For eligible products, this service feature option allows the Customer to retain defective hard disk drive components that the Customer does not want to relinquish due to sensitive data contained within the disk ("Disk Drive") covered under this service. All Disk Drives on a covered system must participate in the defective media retention. Not withstanding anything to the contrary in this document or the HP Single Order Terms for Support, HP waives the right to take possession and title of a defective Disk Drive covered by the defective media retention service feature option in the event a replacement product is delivered by HP to the Customer. The Customer will retain all defective Disk Drives supported by HP under the HP support agreement.

Specifications

Table 3. Service-level options

Not all service-level options are available on all products. The service-level options the Customer has chosen will be specified in the Customer's contract documentation

Option	Delivery specifications
Third-day onsite response, standard business hours (9x5)	<p>Service is available during the coverage window, 9 hours per day, between 8.00 and 17.00 hrs local time, Monday through Friday, excluding HP holidays.</p> <p>An HP-authorized representative will arrive at the Customer's site during the coverage window to begin hardware maintenance service the third coverage day after the service request has been logged. Service requests received outside the coverage window will be logged the next coverage day and serviced within the following 3 coverage days.</p>
Next-day response, standard business hours (9x5)	<p>Service is available during the coverage window, 9 hours per day, between 08.00 to 17.00 hrs local time, Monday to Friday, excluding HP holidays.</p> <p>An HP-authorized representative will arrive at the Customer's site during the coverage window to begin hardware maintenance service on the next coverage day after the service request has been logged. Service requests received outside the coverage window will be logged the next coverage day and serviced within the following coverage day.</p>
4-hour response, standard business hours (9x5)	<p>Service is available during the coverage window, 9 hours per day, between 08.00 to 17.00 hrs local time, Monday to Friday, excluding HP holidays.</p> <p>An HP-authorized representative will arrive at the Customer's site during the coverage window to begin hardware maintenance service within four hours of the service request being logged. The 4-hour response time is measured during the coverage window only. For service requests received after 13.00 hrs/local time, the response time may be carried over to the next coverage window.</p>
4-hour response, extended business hours (13x5)	<p>Service is available during the coverage window, 13 hours per day, which runs from 08.00 to 21.00 hrs local time, Monday to Friday, excluding HP holidays.</p> <p>An HP-authorized representative will arrive at the Customer's site during the coverage window to begin hardware maintenance service within four hours of the service request being logged. The 4-hour response time is measured during the coverage window only. For service requests received after 17.00 hrs local time, the response time may be carried over to the next coverage window.</p>
4-hour response, 24x7	<p>Service is available during the coverage window, which runs 24 hours per day, Monday through Sunday, including HP holidays.</p> <p>An HP-authorized representative will arrive at the Customer's site any time, any day of the year to begin hardware maintenance service within four hours of the service request being logged.</p>

Response Availability

Response times are dependant on the location of your site in relation to a designated HP support office.

To check service availability please contact your HP services representative.

Coverage

HP Hardware Support Onsite Service provides coverage for HP or Compaq branded hardware products and all HP-supplied internal components (such as HP Jetdirect cards, memory and CD-ROMs), as well as attached HP or Compaq branded accessories purchased together with the main product, such as mouse, keyboard, docking station and external monitor of 22" or less.

For some servers and storage products, CPUs, disks and other major internal and external components will be covered if support has been configured accordingly and they are listed in the contract's equipment list (if applicable).

For HP Care Pack Services with "desktop/workstation/thin client/notebook-only" coverage, external monitors and docking stations will not be covered under the service.

Coverage for eligible multivendor systems includes all standard vendor-supplied internal components and the external monitor, keyboard and mouse.

Consumable items including, but not limited to, batteries and Tablet PC pens, maintenance kits and other supplies, as well as user maintenance and non-HP devices, are not covered by this service.

For components that are discontinued, an upgrade path may be required. HP will work with the Customer to recommend a replacement. Not all components will be covered in all countries due to local support capabilities.

For ProLiant servers and storage systems, this service covers HP-branded hardware options qualified for the server, purchased at the same time or afterward, internal to the enclosure, as well as external monitors up to 22" and tower UPS products; these items will be covered at the same service level and for the same coverage period as the server.

For the BladeSystem enclosures, this service covers the enclosure, power supplies, fans and enclosure devices including pass thru, Ethernet interconnect and virtual connect modules.

For servers, storage or BladeSystem enclosures installed within a rack, service also covers all HP qualified rack options including UPS products not exceeding 12kVA, KVM switch, console and PDU, installed within the same rack. Coverage of the UPS battery is not included; standard warranty terms and conditions apply.

Customer responsibilities

If required by HP, the Customer or HP Authorized Representative must register the hardware product to be supported within ten (10) days of purchase of this service, using the registration instructions within the HP Care Pack or the e-mail document provided by HP, or as otherwise directed by HP. In the event a covered product changes location, registration (or a proper adjustment to existing HP registration) is to occur within ten days of the change.

At the sole discretion of HP, service levels with an onsite response time of four hours may require installation of remote connectivity tools and equipment. If remote support is available and required on the covered product, the Customer must provide and allow HP remote access in order to receive an onsite response time of four hours.

The Customer will be required, upon HP request, to support HP's remote problem-resolution efforts. The Customer will:

- Provide all information necessary for HP to deliver timely and professional remote support and to enable HP to determine the level of support eligibility
- Start self-tests and install and run other diagnostic tools and programmes
- Install customer-installable firmware updates and patches
- Perform other reasonable activities to help HP identify or resolve problems, as requested by HP

The Customer is responsible for installing, in a timely manner, critical customer-installable firmware updates, as well as Customer Self Repair parts and replacement products delivered to the Customer.

In cases where Customer Self Repair parts are shipped to resolve a problem, the Customer is responsible for returning the defective part within a time period designated by HP. In the event HP does not receive the defective part within the designated time period or if the part is physically damaged upon receipt, the Customer will be required to pay a fee for the defective part, as determined by HP.

The Customer is responsible for registering to use HP's electronic facility in order to gain access to restricted product information and to receive proactive notification or other services available to the Customer.

With defective media retention service option, it is the Customer's responsibility to:

- Retain physical control of Disk Drives at all times during support delivery by HP; HP is not responsible for data contained on Disk Drives
- Ensure that any Customer sensitive data on the retained Disk Drive is destroyed or remains secure
- Have an authorized representative present to retain defective Disk Drives, accept replacement Disk Drives, provide HP with identification information for each Disk Drive retained hereunder, and, upon HP request, execute a document provided by HP acknowledging the retention of the Disk Drives
- Destroy the retained Disk Drive and/or ensure that the Disk Drive is not put into use again
- Dispose of all retained Disk Drives in compliance with applicable environmental laws and regulations

For Disk Drives supplied by HP to the Customer as a loaner, rental or lease product, the Customer will promptly return the replacement Disk Drives at the expiration or termination of support with HP.

The Customer will be solely responsible for removing all sensitive data before returning any such loaned, rented or leased Disk Drive to HP.

Service limitations

At the discretion of HP, service will be provided using a combination of remote diagnosis and support, services delivered onsite, and other service delivery methods. Other service delivery methods may include the delivery via courier of customer-replaceable parts, such as a keyboard, mouse, other parts classified as Customer Self Repair Parts, or an entire replacement unit. HP will determine the appropriate delivery method required to provide effective and timely Customer support.

An onsite response time will not apply if the service can be delivered using remote diagnosis, remote support, or other service delivery methods described above.

For fully redundant storage technologies (e.g., the XP storage array), the onsite response time applies to critical issues, as reasonably determined by HP, that affect business. Response times for non-critical service requests may vary.

Activities such as, but not limited to, the following are excluded from this service:

- Backup, recovery and support of the operating system, other software and data
- Operational testing of applications, or additional tests requested or required by the Customer
- Troubleshooting for interconnectivity or compatibility problems
- Support for network-related problems
- Services required due to failure of the Customer to incorporate any system fix, repair, patch or modification provided to the Customer by HP
- Services required due to failure of the Customer to take avoidance action previously advised by HP
- User preventative maintenance (except when optional preventative maintenance has been purchased)

Exclusions to the accidental damage protection service feature option

Accidental damage protection does not cover the following:

- Damage caused by failure to provide manufacturer's recommended maintenance or operating specifications
- Damage due to war or nuclear incident, fire, terrorism, vehicle accident, or act of God, unauthorised attempts to repair the product or use of damaged or defective media
- Data loss or corruption, business interruptions, obsolescence, cosmetic damage, rust, change in colour, texture or finish, wear and tear or gradual deterioration
- Error in design, construction, product programming or instructions to the product
- Fraud, theft, unexplained or mysterious disappearance, misuse, abuse or wilful act
- Alteration or modification of the product in any way

For HP business notebook products, major parts replacement is limited to three major parts per product per 12-month period commencing from the HP Care Pack start date; for all other products, major parts replacement is limited to one major part per product per 12-month period commencing from the HP Care Pack start date.

For accidental damage protection coverage

Major parts include, but are not limited to, the screen (LCD), DVD/CD-ROM, motherboard, processor, hard disk drive and memory. Once the specified limit is reached, the cost of repair for a major part will be charged on a time-and-materials basis.

Limitations to the defective media retention service feature option

The defective media retention service feature option applies only to Disk Drives replaced by HP due to malfunction. It does not apply to any exchange of disk drives that have not failed.

Failure rates on hard drives are constantly monitored and HP reserves the right to cancel this service with 30 days notice if HP reasonably believes that the Customer is overusing the defective media retention service feature option (such as when replacement of defective hard drives materially exceeds the standard failure rates for the system involved).

HP SHALL HAVE NO OBLIGATION WHATSOEVER WITH RESPECT TO THE CONTENTS OF OR THE DESTRUCTION OF ANY DISK DRIVE RETAINED BY THE CUSTOMER. NOTWITHSTANDING ANYTHING IN THE HP SINGLE ORDER TERMS FOR SUPPORT OR THE TECHNICAL DATA SHEET TO THE CONTRARY, IN NO EVENT WILL HP OR ITS AFFILIATES, SUBCONTRACTORS, OR SUPPLIERS BE LIABLE FOR ANY INCIDENTAL, SPECIAL, OR CONSEQUENTIAL DAMAGES OR DAMAGES FOR LOSS OF OR MISUSE OF DATA UNDER THIS DEFECTIVE MEDIA RETENTION SERVICE.

Ordering information

Availability of service features and service levels may vary according to local resources and may be restricted to eligible products and geographic locations.

For more information

For more information on HP Services, contact any of our worldwide sales offices or resellers or visit our websites at:

www.hp.com/hps/support

www.hp.com/hps/carepack

© Copyright 2008 Hewlett-Packard Development Company, L.P. The information contained herein is subject to change without notice. The only warranties for HP products and services are set forth in the express warranty statements accompanying such products and services. Nothing herein should be construed as constituting an additional warranty. HP shall not be liable for technical or editorial errors or omissions contained herein.

Technology for better business outcomes

To learn more, visit www.hp.com

5982-6547EEIE, April 2008

